

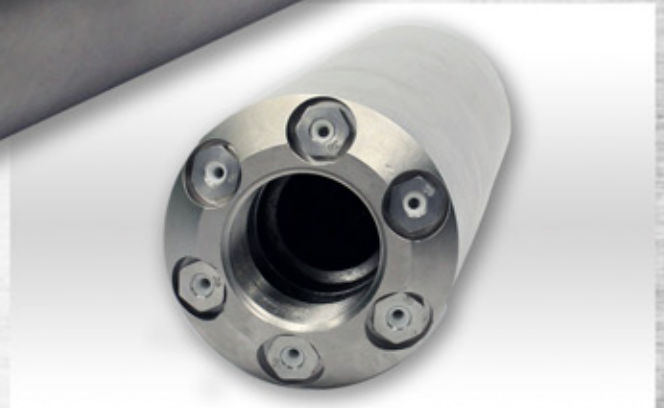
GLOBAL SUPER PENETRATOR



NozzTeq[®]
Taking Science to the Sewer[®]

866-620-5915

SITS LOW ON BOTTOM OF THE PIPE



GLOBAL SUPER PENETRATOR

PIPE LINES WITH OFF-SETS, DROP JOINTS & VOIDS

- Global Super Penetrating pipe cleaning nozzle sits low on the bottom of the pipe due to the weight.
- Specific design allows you to successfully navigate over small voids, off-sets, drop joints etc. in the pipe.
- Effective in 6" to 30" sewer lines.
- Supplied with replaceable jets either in stainless steel or ceramic stainless steel material.
- Available with or without penetrating forward jets.
- High Quality Construction with nickel coating
- Rear jet incidence 12°

WHY Nozzteq? Because our Equipment is Engineered for Long Lasting Performance!

866-620-5915

Nozzteq Inc. ADDRESS: 1949 Calumet Street - Clearwater, FL 33765

Phone: 1-866-620-5915 Fax: 1-603-413-6744

EMAIL: info@nozzteq.com HOME PAGE: www.nozzteq.com



NozzTeq[®]
Taking Science to the Sewer[®]

PART NO. GSP

Global Super Penetrator™ Specifications

Global Super Penetrating pipe cleaning nozzle sits low on the bottom of the pipe due to the weight. Navigate through its specific design successfully over small voids, off-sets, drop joints etc. in the pipe. Effective in 6" to 30" sewer lines. Supplied with replaceable jets either in stainless steel or ceramic stainless steel material. Available with or without penetrating forward jets.

Hose Size	¾", 1", 1¼" & 1½"
Construction	High Quality Construction with Nickel Coating
Water Flow	50 GPM to 300 GPM
Pipe Dimension	6" - 30"
Number of Rear Jets	6
No. of Optional Front	0, 1, 3 or 4
Weight	18 lbs
Length	12"
Width	3 ¼"

Note: Weights and dimensions are approximate and subject to change without notice.



Global Super Penetrator



Rear View